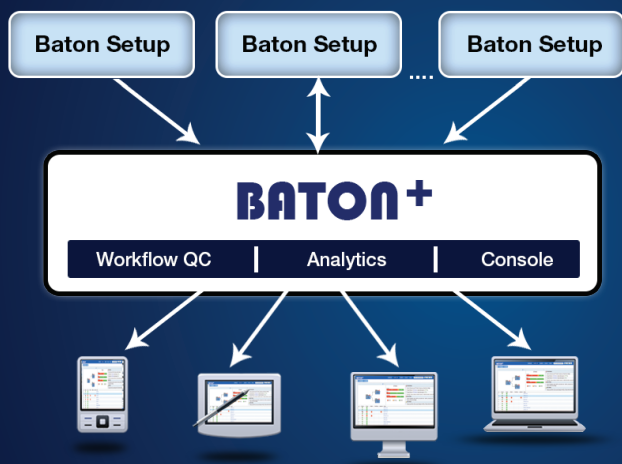


BATON+™

Consistent Quality Across the Enterprise



Interra Systems' BATON+ is an add-on tool in the BATON suite that works across multiple BATON installations and provides new functionalities over the core file-based QC functions provided by BATON: Workflow QC, Data Analytics, and Management Console.

BATON+ leverages workflow definitions to ensure consistency of QC results across the content life cycle. BATON+ offers extensive QC trend analysis across multiple BATON installations to improve workflow efficiency. Moreover, it acts as a centralized console for synchronizing asset details from different BATON installations.

WORKFLOW QC

BATON+ lets users define workflows to represent the stages through which media content flows in a facility. By defining workflows, BATON+ users can ensure metadata consistency, propagate creative intent, and compare QC reports in different ways across content lineage.

QC DATA ANALYTICS

Baton+ includes highly efficient analytic tool that seamlessly integrates with multiple BATON installations, captures the QC data, and offers a visual representation of the data analysis results in the form of reports and graphs. This enables users to effectively track trends and anomalies in the media content.

BATON CENTRAL MANAGEMENT CONSOLE

With the BATON Central Management Console, users have a consolidated view of QC planning related information from different BATON installations. With the console, users can also ensure consistency across BATON installations by publishing the information from one Baton system to another.

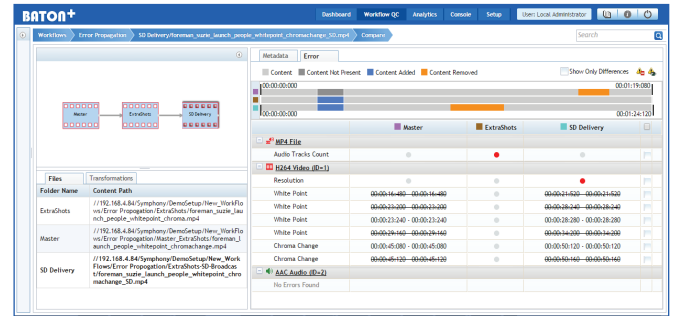
Key Features

- Acts as a repository for QC planning-related information and QC data for different BATON installations
- Syncs with multiple BATON installations to fetch QC data on a regular basis
- Syncs the BATON Test Plans automatically from the registered locations
- Automates QC data analysis for tracking of trends, patterns, and anomalies
- Exhibits the utilization of BATON resources for optimum performance
- Creates time-based reports to analyze daily, weekly and monthly QC data
- Allows users to export the statistics in PDF and Excel formats
- Email or save the reports to a location as per defined schedule
- Enables users to manage different BATON installations from a single point using the Central Management Console
- Lets users create folder-based workflows that define the life cycle of content with respect to their physical location
- Offers the ability to define metadata consistency rules over different stages in a workflow
- Provides complete content lineage information
- Propagates changes to the QC report reflecting creative intent across the lineage
- Provides richer QC report comparison options in the form of timelines
- Compares the Result Statistics and Metadata Statistics for different Baton Servers
- Compares the Performance statistics for different Resolutions, Formats and Test Plans across Baton Servers
- Lets users to publish data and settings across BATON installations using the console, ensuring consistency across multiple installations

BATON+ Detailed Features

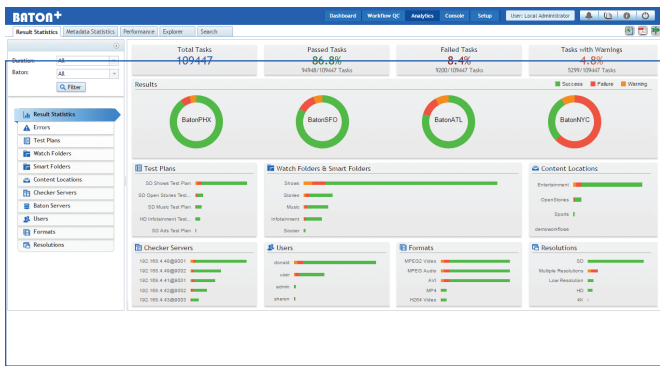
WORKFLOW QC

BATON+ lets users define folder-based workflows to perform content-centric QC. As content passes through different stages in the workflow, different versions of same content are created. While each version undergoes QC in BATON at different points in the workflow, there is a need to look at all the QC reports for same content at different stages in a holistic manner. Using BATON+ workflows, users can analyze content at different stages, thereby aligning QC results with the content life cycle. With workflows, the files that are verified in BATON are connected together using lineage information provided by fingerprinting or name matching solution. Workflow QC provides ways to add lineage-based checks on metadata, perform automatic review of reports, and compare reports along the content lineage. Reports reviewed by BATON+ are also available with BATON for further processing.



QC DATA ANALYTICS

BATON+ provides comprehensive view of the QC landscape using time-based, graphical, and tabular reports.

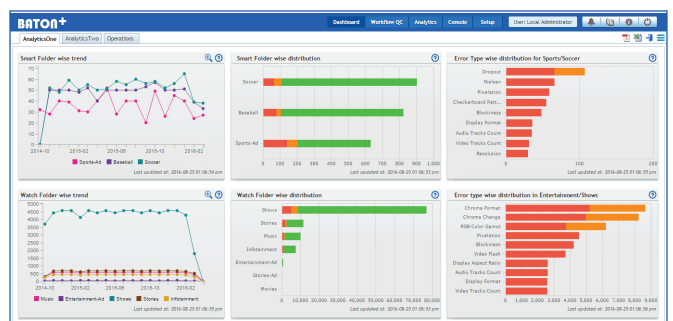


BATON+ lets users examine and analyze the metadata statistics grouped under different sections, such as container, video, audio, reported error count, and more. Users can analyze the statistics on different criterion, such as test plans, content location, smart folder, and so on. In addition to metadata, users can also examine task statistics to get the complete picture of the QC activity and QC data from a central location. BATON+ provides a refined search facility wherein users can perform QC search and also configure relations between the specified search criteria. The search results can be exported in PDF and EXCEL format to share them with other users or perform offline analysis. These reports can also be sent by email or saved to specified locations as per user defined schedule.

Moreover, BATON+ also allows users to analyze core utilization and task queues for optimum performance using graphs and statistics.

CUSTOMIZABLE DASHBOARD

BATON+ provides a configurable dashboard with a user interface that supports the addition and deletion of any number of dashlets, as required. The dashboard enables the analysis of various trends and patterns, such as format distribution and error related distribution of QC data. The charts, tables, and timelines in the dashboard display the most used elements of the enterprise QC data. BATON+ provides the capability of drilling down graphs which helps users to look into the specific details of an error.



CENTRALIZED BATON MANAGEMENT

With the BATON Central Management Console, users have a consolidated view of QC planning related information from different BATON installations. This includes test plans, alerts, smart folders, content locations, checkers, user accounts, BATON settings, and license status. With the console, users can also ensure consistency across BATON installations by publishing the information from one Baton system to another. This helps in reducing the setup time for a newly-installed Baton server. Additionally, Test Plans get synchronized automatically from the registered locations. The user can easily keep track of the deleted BATON resources for each BATON+ resource. Alerts generated by the BATON installation are also displayed in BATON+, enabling quicker actions. The console also facilitates license updates of one or more BATON installations.